



MAKE YOUR **MINING** &  
**CRUSHING** OPERATIONS  
MORE COMPETITIVE,  
PRODUCTIVE AND PROFITABLE





## OUR VALUE FOR MINING & CRUSHING INDUSTRY

*Bearings to make your operations more competitive, productive and profitable*

**FAG**

Premium european bearings for superior quality and life

**KG<sup>®</sup>**  
ULTRA

Premium yet economical bearings built to P6 precision focused on improving your TCO. KG Ultra bearings come with high-quality protective packaging to ensure safety and longevity of the bearings

**KG<sup>®</sup>**  
BEARINGS

Economical bearings focused on customers and applications looking to save as much as possible while maintaining reliability

**KG<sup>®</sup>**  
TRUCK SOLUTIONS

A full range of Made-in-India Wheel Bearings, Repair Inset Units, and Hubs to cater to European, American and Indian trucks



EXCAVATION

- Cylindrical Roller Bearings
- Spherical Roller Bearings
- Spherical Roller Thrust Bearings



CRUSHING & GRINDING

- Spherical Roller Bearings
- Tapered Roller Bearings
- Axial Cylindrical Roller Bearings
- Plummer Blocks



TRANSPORT

- Cylindrical Roller Bearings
- Spherical Roller Bearings
- Tapered Roller Bearings
- Deep Groove Ball Bearings
- Self-Aligning Ball Bearings
- Truck Bearings

*Premium filtration solutions to protect your engine and equipment*



**KG<sup>®</sup>**  
BULK FILTRATION



**KG<sup>®</sup>**  
FILTERS



**HIFI FILTER<sup>®</sup>**

*One-Stop-Shop*

**Bonfiglioli**

**DropsA**

**SCHAEFFLER**

**SAMPA**

## *Our Range*

Spherical  
roller bearings



Double / 4-row  
taper roller bearings



Bearing  
induction heater



Vibrating  
screen bearings



4-row cylindrical  
roller bearings



Shims and  
plummer block



## *Engineered To The Finest*



### TECHNICAL SUPERIORITY

- Made with high-quality GCr15 and GCr15SiMn Steel
- Hardness of 58 – 64 HRC, matching OEM requirements
- All parts and components manufactured under a single roof for total control
- P6 Tolerance or higher
- Internal geometry matching leading European standards



### LEADING QA SYSTEMS

- KG boasts fewer than five claims a year through a rigorous testing process involving QA engineers in China and Dubai to do 130% product and component checking before it is delivered to you



### UNPARALLELED TECHNICAL AND AFTER SALES SUPPORT

- Installation support to ensure bearing protection
- Complimentary fuel & oil contamination analysis
- Product selection and support to ensure smooth operation
- Condition monitoring and stock monitoring to maximize uptime
- Technical training & application engineering support
- Failure analysis to determine improvement opportunities



### BENEFICIAL COMMERCIAL TERMS

- Prices focused on driving meaningful ROI improvements along with local stock for easy access

## Competitive pricing and highest quality bearings to drive meaningful ROI

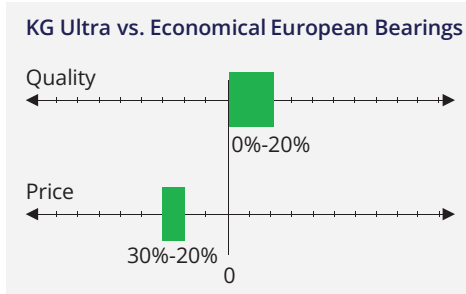


Fig. a. KG Ultra offers equal or better quality than economical European bearings within a 0%-20% range, at a price benefit of 20%-30%.

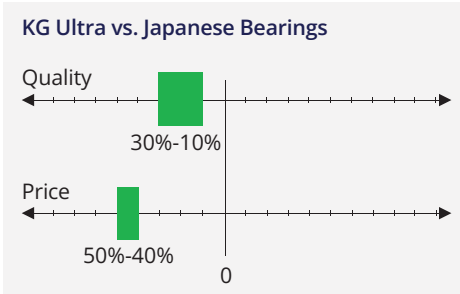


Fig. b. KG Ultra attains near-equivalent quality to Japanese bearings within a 10%-30% range, while offering considerable cost savings of 40%-50%.

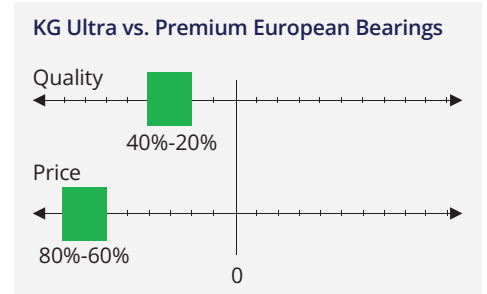


Fig. c. KG Ultra offers comparable quality within 20%-40% of Premium European Bearings, with a significant price benefit of 60%-80%.

## Gain a lasting advantage through KG's leading control mechanisms

### Component-wise checking at the point of manufacturing

- ▣ All Materials are checked as per T18254 standards
- ▣ The Material report is shared with supplier from the steel manufacturer
- ▣ Inspection at every stage of production:
  - Initial workpiece inspection
  - Patrol Inspection
  - Sampling Inspection
  - 100% final inspection

### 100% checking of finished bearings by independent team

- ▣ 100% checking is controlled by KG Team
- ▣ 6 parameters are identified according to the QMD (Quality Management Document)
  - Dimensional Observations
  - Hardness Rolling Elements
  - Cage (Type, Color, Thickness)
  - Burn marks on the raceways/Roller
  - Clearance of the Bearings
  - Visual Inspection for cracks, dents, burring, rust

### 30% inspection upon arrival in Dubai laboratory

- ▣ Multiple parameters taken into considerations in 30% inspection at KG Lab
  - Dimensional Observations (Inner bore, outer diameter, width)
  - Visual inspection for cracks, dent, burring, rust

Note: Each stage ensures adherence to quality standards and customer satisfaction.

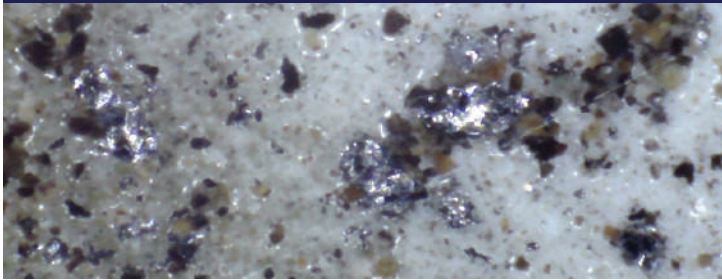
### Regular factory audits to ensure machinery and process upkeep

- ▣ Supplier audit report consists of supplier details, ISO certifications, auditor details etc.
- ▣ Score summary report consists of processes along with its score and rating details

# ELIMINATING THE HIDDEN THIEF OF YOUR MACHINE LIFE

A practical and portable solution, useful both in-plant machinery and mobile equipment to filter fuel and oil contamination and achieve ISO cleanliness levels.

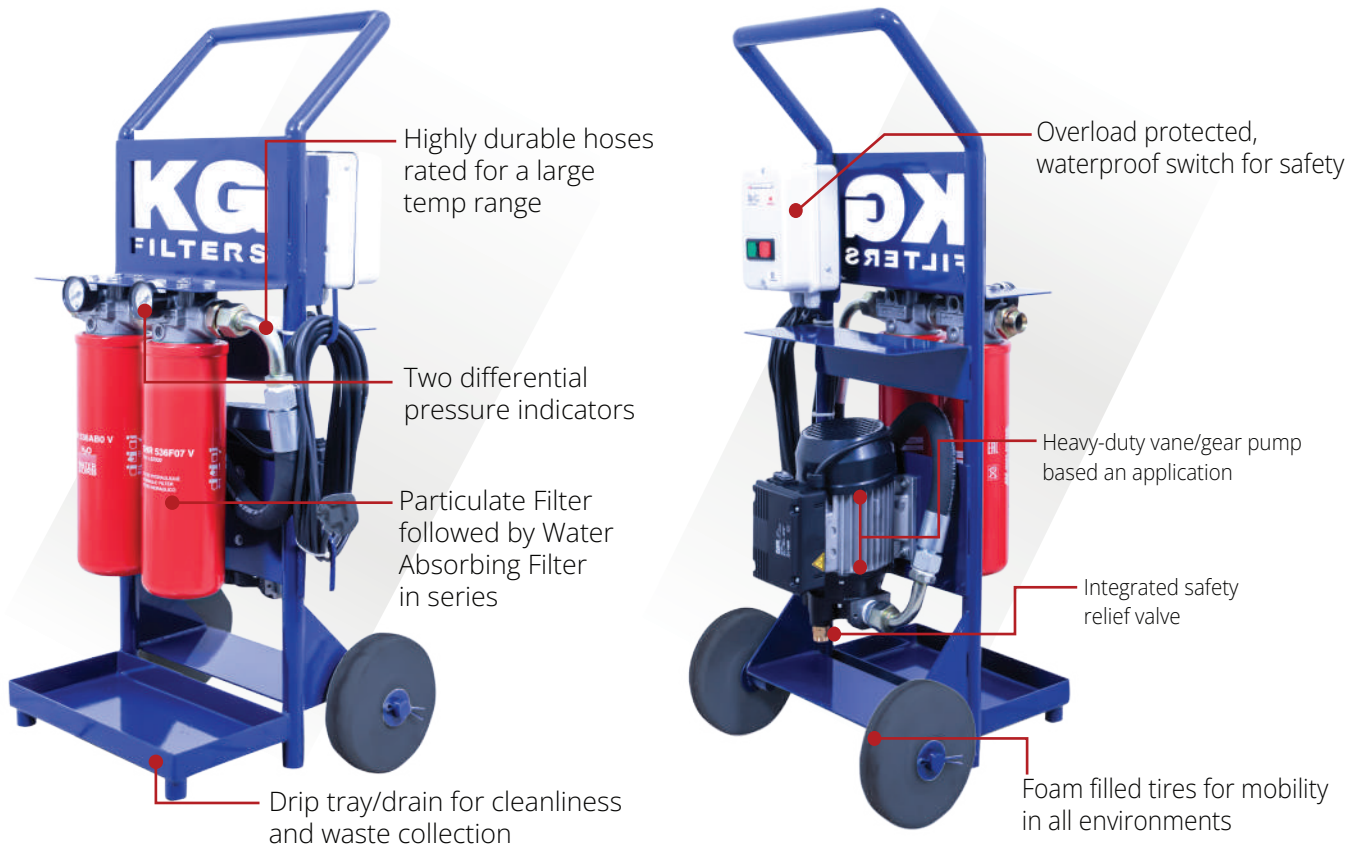
Before Filtration



After Filtration



## *Offline Bulk Filtration for tank flushing and transfer of diesel and oil*



## Inline Bulk Filtration for storage tanks, pipes and dispensing units

### KG FILTRATION KIT



### KG PRO FILTRATION KIT



### KG HIGH-CAPACITY FILTRATION KIT



### KG MAXFLOW FILTRATION KIT



\*Our engineering team also works with clients to build customized solutions based on their specific needs

## Advantages of HIFI-KG Bulk Filters

HIFI-KG bulk filters offer several advantages, including:

Fiber glass media that maintains a consistent efficiency

$\beta_{2,000} - \beta_{10,000}$  vs. industry standards of  $\beta_{200}$  to 1000 only

Single pass filtration that can remove all types of contaminants in one go

The most cost-effective solution available

## Highest beta ratio in the world

| Main Data      |                   |                      |                   | Filter Media |                            | Applications                                |
|----------------|-------------------|----------------------|-------------------|--------------|----------------------------|---|
| Product Number | Direction of flow | Max working pressure | Temperature range | Media type   | Micron Rating / Beta Ratio |   |
| SHR 536F07 V   | Out/In            | 24 bar               | -25°C to +120°C   | Fiberglass   | $\beta(7\mu) \geq 2\,000$  | Hydraulic oil                               |
| SHR 536F25 V   | Out/In            | 24 bar               | -25°C to +120°C   | Fiberglass   | $\beta(25\mu) \geq 2\,000$ | Gear oil/engine oil (high viscous fluids)   |
| SHR 536F04 V   | Out/In            | 24 bar               | -25°C to +120°C   | Fiberglass   | $\beta(4\mu) \geq 10,000$  | Diesel/ transformer oil (Low viscous fluid) |



## Automated lubrication systems to drive operational efficiency

Automated lubrication systems deliver exact lubricant quantities to prevent over or under-lubrication. This continuous, automated approach minimizes manual interventions and human errors, significantly reducing repair, failure, and labor costs.



### LUBRICATION SOLUTIONS

DropsA automatic lubrication systems enhance steel making operations by delivering precise lubricant replenishment across all critical points. They offer various lubrication solutions, including grease, oil, air/oil, and circulating oil systems.



### QUALITY ASSURANCE

Every component is meticulously engineered to meet the highest standards, guaranteeing both reliability and efficiency for lubrication processes in heavy machinery and industrial automation systems.



### COMPONENT CATALOGUE

Component catalogue by DropsA features a wide array of high-quality lubrication system components, from fittings and valves to controllers, providing tailored solutions to diverse lubrication requirements through innovation and expertise.



### SERVICES AND SUPPORT

With a team of seasoned professionals, DropsA and KG provides comprehensive assistance throughout the lifecycle of lubrication systems, offering tailored solutions to meet individual client needs.



### COST EFFECTIVE SOLUTION

This centralized automatic lubrication system boosts machinery and bearing longevity by administering the precise amount of lubricant at the right intervals, effectively minimizing wear and reducing associated costs for improved operational excellence.

## Range of lubrication solutions

### For steel industry applications

- Mining
- Rolling mill air/oil lubrication system
- Continuous Casting with Dual Line Greasing System
- Coiler spray
- Straighteners
- Cages, looper and shears
- Working rolls
- Intermediate rolls and back-up rolls

### For product lines and spares

- Single/Dual line lubrication system
- Dual line lubrication system
- Total loss lube systems
- Air/oil lubrication systems
- Near dry machining MQL
- Pumps
- Sensors and monitoring devices
- Valves and dividers

## Benefits of automated lubrication systems



Considerable savings on spare and repair costs



Enhanced dependability of the machine



Reduced losses in production and shutdowns



Decreased effect on the environment



## ONE STOP FILTER SHOP

With a single point of contact for your filtration, take advantage of numerous benefits and profit from a trusted ally for the maintenance management of your vehicles, machinery and equipment.



## QUALITY & WARRANTY

In filtration, "quality" and "performance" are essential to protect people, equipment and environments. These concerns are at the heart of our business and our approach.



## STOCK & AVAILABILITY

Recognising the impact that downtime can have on a business, we ensure maximum availability with 30,000 items available from stock and fast delivery worldwide.



## SUPPORT & ADVICE

Teams and digital tools to support all your service needs and help you better manage your fleets and operations



## APPLICATION WARRANTY

HIFI puts their money where their mouth is and is the only brand to offer a warranty on the repair cost of the application if there is any filtration-related damage.

### OUR MOBILE ACTIVITIES



CONSTRUCTION



MINING AND QUARRYING



ON-ROAD



MARINE



AGRICULTURE

### OUR INDUSTRY ACTIVITIES



MANUFACTURING



METALS



CONSTRUCTION MATERIALS



COMPRESSORS



FOOD AND BEVERAGES

*What types of products can I find at HIFI Filter®?*



FILTERS



ACCESSORIES



FILTRATION SYSTEM  
(FLUID MANAGEMENT  
& INDUSTRIAL  
FILTRATION)



MAINTENANCE  
KITS



MEDIA CUTTING





# ACCELERATE YOUR FLEET ECONOMICS WITH KG FILTERS

*KG Filters aim to effectively cater to aftermarket needs through:*

- High-quality parts and finishing to improve performance and life
- Pricing that will help drive margin to make customers more competitive, productive, and profitable
- Strong design and packaging to drive scalability
- Ability to quickly develop range based on customer requirements
- Strong stock in Dubai for more manageable delivery times

## RANGE COVERING MOST POPULAR EUROPEAN & ASIAN TRUCKS



## ACROSS ALL FILTERS TYPE

OIL FILTER



FUEL FILTER



HYDRAULIC FILTER

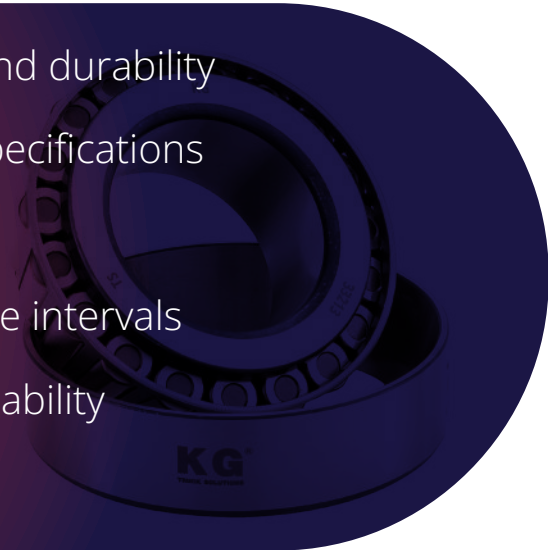


AIR FILTER



*Bearings to strengthen the economics of your truck fleet*

- ⦿ Built to high precision (P6) to improve longevity and durability
- ⦿ Premium quality materials that adhere to OEM specifications
- ⦿ Maximum reliability through 100% quality checks
- ⦿ High-quality grease that effectively reduces service intervals
- ⦿ Test certificate included to ensure strong dependability
- ⦿ Competitive pricing and strong stock in Dubai



## WHEEL HUB

ENGINEERED FOR STRENGTH



## TAPER ROLLER BEARINGS

BUILT FOR PRECISION

## REPAIR INSERT UNIT

CRAFTED FOR CONVENIENCE







*RANGE OF INDUSTRIAL SPARES TO OFFER A  
ONE-STOP-SHOP*



 **Bonfiglioli**

*ONE OF THE WORLD'S LEADING ITALIAN  
MANUFACTURERS OF GEARBOXES AND GEARMOTORS*

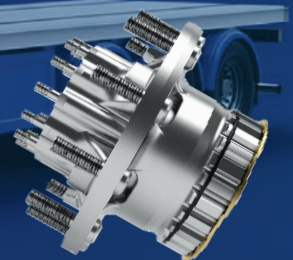


**SCHAEFFLER**

*HIGH TEMPERATURE, MULTIPURPOSE GREASE,  
AND CONDITION MONITORING SOLUTIONS*



*TURKISH ENGINE AND CHASSIS SPARE PARTS*







Scan for quick  
access to KG:



[kginternational.com](http://kginternational.com)



[sales@kginternational.com](mailto:sales@kginternational.com)



[/company/kg-international-fzco](https://www.linkedin.com/company/kg-international-fzco)



[/kgintldubai](https://www.facebook.com/kgintldubai)