



MAKE YOUR **STEEL PLANT**
MORE **COMPETITIVE,**
PRODUCTIVE AND PROFITABLE

#CHOOSEKG



OUR VALUE FOR THE STEEL INDUSTRY

Bearings to make your operations more competitive, productive and profitable



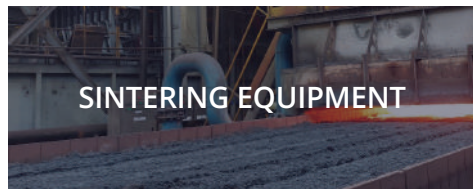
Premium yet economical bearings built to P6 precision focused on improving your TCO. KG Ultra bearings come with high-quality protective packaging to ensure safety and longevity of the bearing



Full range of premium European bearings from the world's leading manufacturer

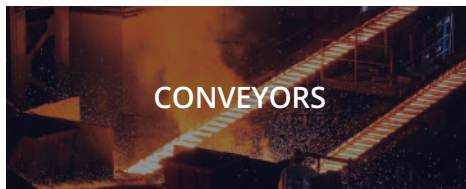


Economical bearings focused on customers and applications looking to save as much as possible while maintaining reliability



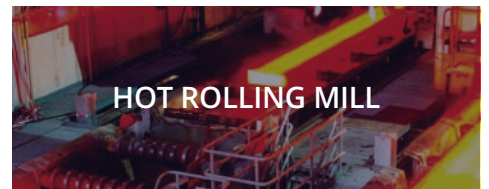
SINTERING EQUIPMENT

- Two-row Taper Roller Bearing
- Two-row Cylindrical Roller Bearing



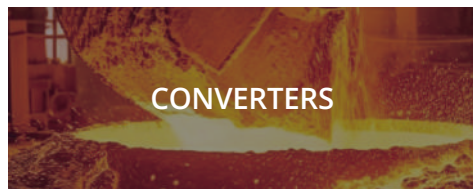
CONVEYORS

- Deep Groove Ball Bearing
- Spherical Roller Bearings
- Plummer Blocks
- Pillow Blocks



HOT ROLLING MILL

- Two/four row Taper Roller Bearing
- Multi-row Cylindrical Roller Bearing
- Spherical Thrust Roller Bearing



CONVERTERS

- Spherical Roller Bearing
- Cylindrical Roller Bearing for Gearboxes
- Plummer Blocks



CONTINUOUS CASTER

- Spherical Roller Bearing
- Toroidal Roller Bearing



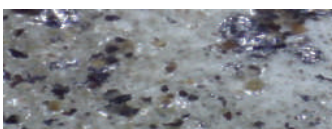
COLD ROLLING MILL

- Two/Four row Taper Roller Bearing
- Multi-row Cylindrical Roller Bearing
- Spherical Thrust Roller Bearing

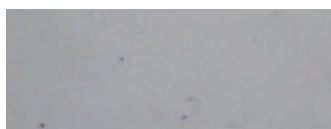
Fuel and oil cleaning solutions to increase its life and protect your equipment

An innovative and unique solution to protect your engines by cleaning hydraulic oil and transformer oil from metal, dust, silica and rust particles with an efficiency of 99.95%

The outcome:



Before Filtration



After Filtration

Proudly used by:



sij | group



Our Range

Spherical
roller bearings



Double-row taper
roller bearings



4-row cylindrical
roller bearings



Vibrating
screen bearings



4 row taper
roller bearings



Bearing
induction heater



Engineered To The Finest



TECHNICAL SUPERIORITY

- Made with high-quality GCr15 and GCr15SiMn Steel
- Hardness of 58 – 64 HRC, matching OEM requirements
- All parts and components manufactured under a single roof for total control
- P6 Tolerance or higher
- Internal geometry matching leading European standards



LEADING QA SYSTEMS

- KG boasts fewer than five claims a year through a rigorous testing process involving QA engineers in China and Dubai to do 130% product and component checking before it is delivered to you



UNPARALLELED TECHNICAL AND AFTER SALES SUPPORT

- Installation support to ensure bearing protection
- Complimentary fuel & oil contamination analysis
- Product selection and support to ensure smooth operation
- Condition monitoring and stock monitoring to maximize uptime
- Technical training & application engineering support
- Failure analysis to determine improvement opportunities



BENEFICIAL COMMERCIAL TERMS

- Prices focused on driving meaningful ROI improvements along with local stock for easy access

DRIVE DOWN COSTS WHILE GAINING MAXIMUM RELIABILITY

Competitive pricing and highest quality bearings to drive meaningful ROI

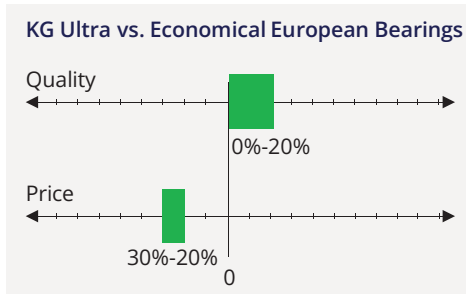


Fig. a. KG Ultra offers equal or better quality than economical European bearings within a 0%-20% range, at a price benefit of 20%-30%.

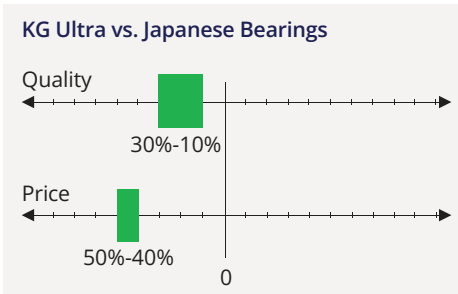


Fig. b. KG Ultra attains near-equivalent quality to Japanese bearings within a 10%-30% range, while offering considerable cost savings of 40%-50%.

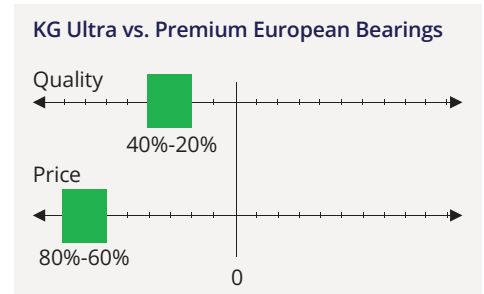


Fig. c. KG Ultra offers comparable quality within 20%-40% of Premium European Bearings, with a significant price benefit of 60%-80%.

Gain a lasting advantage through KG's leading control mechanisms

Component-wise checking at the point of manufacturing

- ▣ All Materials are checked as per T18254 standards
- ▣ The Material report is shared with supplier from the steel manufacturer
- ▣ Inspection at every stage of production:
 - Initial workpiece inspection
 - Patrol Inspection
 - Sampling Inspection
 - 100% final inspection

100% checking of finished bearings by independent team

- ▣ 100% checking is controlled by KG Team
- ▣ 6 parameters are identified according to the QMD (Quality Management Document)
 - Dimensional Observations
 - Hardness Rolling Elements
 - Cage (Type, Color, Thickness)
 - Burn marks on the raceways/Roller
 - Clearance of the Bearings
 - Visual Inspection for cracks, dents, burring, rust

30% inspection upon arrival in Dubai laboratory

- ▣ Multiple parameters taken into considerations in 30% inspection at KG Lab
 - Dimensional Observations (Inner bore, outer diameter, width)
 - Visual inspection for cracks, dent, burring, rust

Note: Each stage ensures adherence to quality standards and customer satisfaction.

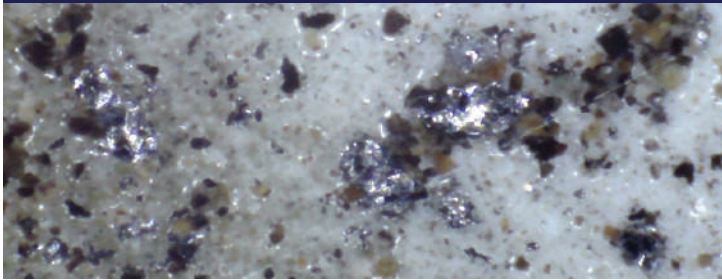
Regular factory audits to ensure machinery and process upkeep

- ▣ Supplier audit report consists of supplier details, ISO certifications, auditor details etc.
- ▣ Score summary report consists of processes along with its score and rating details

ELIMINATING THE HIDDEN THIEF OF YOUR MACHINE LIFE

A practical and portable solution, useful both in-plant machinery and mobile equipment to filter fuel and oil contamination and achieve ISO cleanliness levels.

Before Filtration



After Filtration



Offline Bulk Filtration for tank flushing and transfer of diesel and oil



Inline Bulk Filtration for storage tanks, pipes and dispensing units

KG FILTRATION
KIT



KG PRO
FILTRATION KIT



KG HIGH-CAPACITY
FILTRATION KIT



KG MAXFLOW
FILTRATION KIT



*Our engineering team also works with clients to build customized solutions based on their specific needs

Advantages of HIFI-KG Bulk Filters

HIFI-KG bulk filters offer several advantages, including:

Fiber glass media that maintains a consistent efficiency

$\beta_{2,000} - \beta_{10,000}$ vs. industry standards of β_{200} to 1000 only

Single pass filtration that can remove all types of contaminants in one go

The most cost-effective solution available

Highest beta ratio in the world

Main Data				Filter Media		Applications
Product Number	Direction of flow	Max working pressure	Temperature range	Media type	Micron Rating / Beta Ratio	
SHR 536F07 V	Out/In	24 bar	-25°C to +120°C	Fiberglass	$\beta(7\mu) \geq 2\,000$	Hydraulic oil
SHR 536F25 V	Out/In	24 bar	-25°C to +120°C	Fiberglass	$\beta(25\mu) \geq 2\,000$	Gear oil/engine oil (high viscous fluids)
SHR 536F04 V	Out/In	24 bar	-25°C to +120°C	Fiberglass	$\beta(4\mu) \geq 10,000$	Diesel/ transformer oil (Low viscous fluid)

Automated lubrication systems to drive operational efficiency

Automated lubrication systems deliver exact lubricant quantities to prevent over or under-lubrication. This continuous, automated approach minimizes manual interventions and human errors, significantly reducing repair, failure, and labor costs.



LUBRICATION SOLUTIONS

DropsA automatic lubrication systems enhance steel making operations by delivering precise lubricant replenishment across all critical points. They offer various lubrication solutions, including grease, oil, air/oil, and circulating oil systems.



QUALITY ASSURANCE

Every component is meticulously engineered to meet the highest standards, guaranteeing both reliability and efficiency for lubrication processes in heavy machinery and industrial automation systems.



COMPONENT CATALOGUE

Component catalogue by DropsA features a wide array of high-quality lubrication system components, from fittings and valves to controllers, providing tailored solutions to diverse lubrication requirements through innovation and expertise.



SERVICES AND SUPPORT

With a team of seasoned professionals, DropsA and KG provides comprehensive assistance throughout the lifecycle of lubrication systems, offering tailored solutions to meet individual client needs.



COST EFFECTIVE SOLUTION

This centralized automatic lubrication system boosts machinery and bearing longevity by administering the precise amount of lubricant at the right intervals, effectively minimizing wear and reducing associated costs for improved operational excellence.

Range of lubrication solutions

For steel industry applications

- Mining
- Rolling mill air/oil lubrication system
- Continuous Casting with Dual Line Greasing System
- Coiler spray
- Straighteners
- Cages, looper and shears
- Working rolls
- Intermediate rolls and back-up rolls

For product lines and spares

- Single/Dual line lubrication system
- Dual line lubrication system
- Total loss lube systems
- Air/oil lubrication systems
- Near dry machining MQL
- Pumps
- Sensors and monitoring devices
- Valves and dividers

Benefits of automated lubrication systems



Considerable savings on spare and repair costs



Enhanced dependability of the machine



Reduced losses in production and shutdowns



Decreased effect on the environment



Scan for quick
access to KG:



kginternational.com



sales@kginternational.com



[/company/kg-international-fzco](https://www.linkedin.com/company/kg-international-fzco)



[/kgintldubai](https://www.facebook.com/kgintldubai)